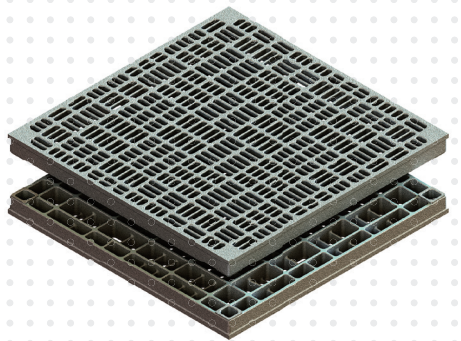
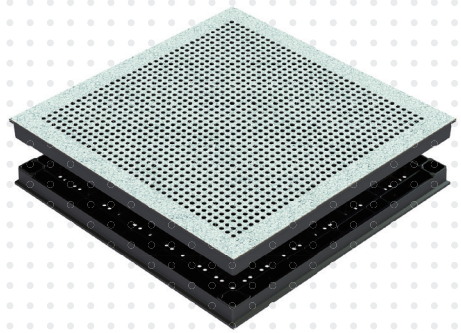
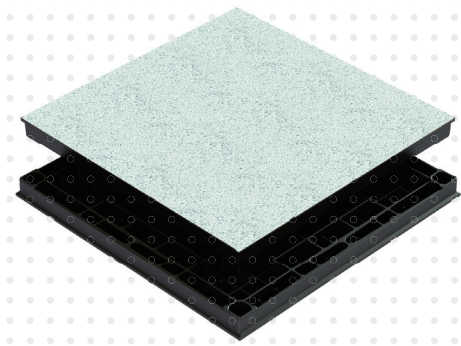


www.seohotsc.com

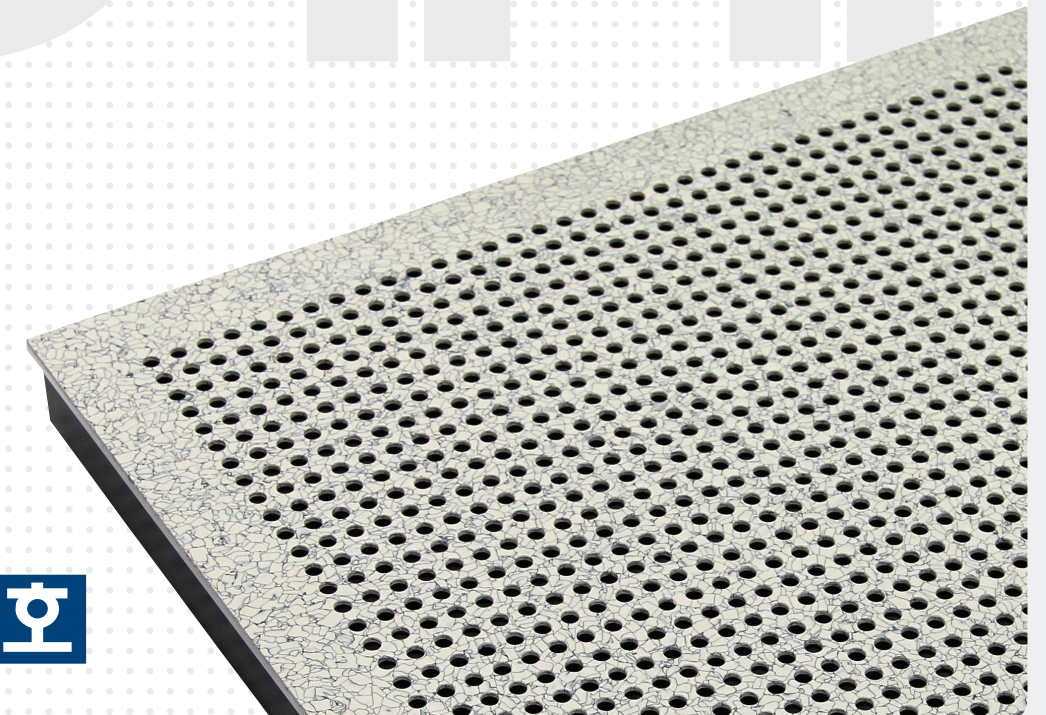
Raised Access Floor System
by **SEOHO INC.**



#391, Seongjung-ro, Iwol-myeon, Jincheon-gun,
Chungbuk, South, Korea

Tel. +82.43.534.8800 Fax. +82.43.534.8900

www.seohotsc.com



**‘The best efforts for ultimate customer satisfaction’
is the basic principle of all executives and
staff members of SEOHO (SH)**

Raised Access Floor System



SH Floor Panels

SH produces aluminum panels in range from 500~1,500kgs with metric dimensions as well as a practical line of products to meet all worldwide, military, governmental requirements and specifications. All panels are available in solid, perforated and grated designs. Each panel is produced by die-cast, milled and finished in accordance with standards and quality guidelines in the industries. In order to enhance qualities, to control manufacturing.

SH produces ingots which are using for panels in our facility located in Jin Cheon, South Korea.

Recently, SH is to be the sole company which manufactures 100% of panels without outsourcing.

All executives and staff of SEOHO (SH) keep in mind as a discipline “Do our best with continuous efforts is the way to maximize customer’s satisfaction.

SEOHO (SH) was founded in 1995, has been growing as a leader in the die-casting and manufacturing of aluminum raised access flooring for the cutting-edge industries such as high tech. microelectronic, semiconductor in the FPD markets. SH is strongly focusing on pharmaceutical field and sever room as well. Since 1995, SH has developed designs, engineering and supported products to meet ever-changing requirements in industries. SH provides customer solutions and technical supports worldwide.

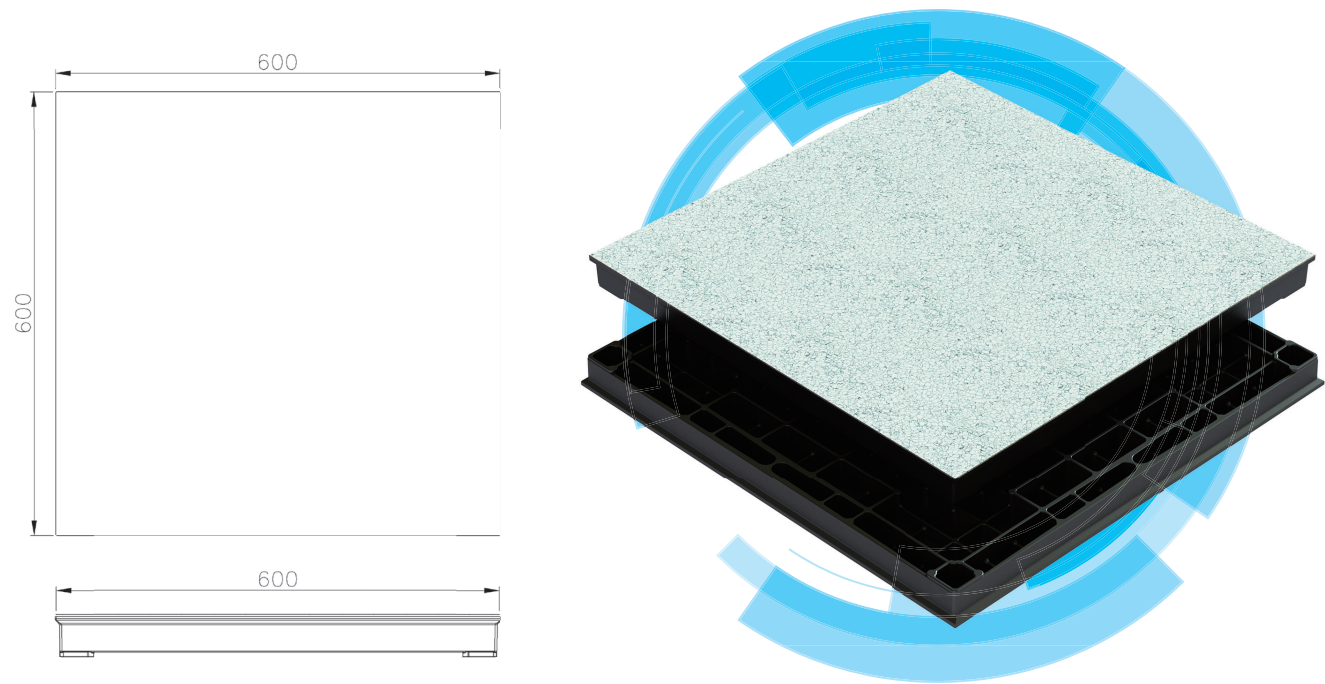
SH always take steadfast and enterprising attitude to make a good impression for customers and we promise that we try to transform ourselves into a major eco-friendly company. SH is committed to providing technical supports and engineering expertise to meet the requirements for your next projects.

Solid Panel

SH's solid panels are designed for specific places where heavier loads are required, the unique rib structure provides excellent dispersion of weights to achieve minimum deflection with maximum load- bearing capacities for placement of equipment and tool moves-ins.

Features

- Advanced load endurance capacity.
- Interchangeable with perforated and grating panels.
- Various options of finishing materials.
- Semi-permanent usage through recycling.
- Excellent process ability.
- Reduced sub-materials(pedestals).



SOLID (Blind) PANELS LOAD CHART

Type	Model	Dimension(mm)	Concentrated Load @ 1/2 Edge	Finish Type
STANDARD	ALB-639	600 x 600 x 39(T)	500kgf / 2.0mm deflection	1. PVC Tile - Conductive Tile - Static Dissipative Tile 2. E-coating - Black, Silver colours 3. Epoxy powder - Conductive powders (Gray, Black colours) - Non-conductive powders (Ivory, Sliver colours) 4. Ni-Cr Plating
	ASB-639	600 x 600 x 39(T)	600kgf / 2.0mm deflection	
	ASB-644	600 x 600 x 44(T)	800kgf / 2.0mm deflection	
	ASB-648	600 x 600 x 48(T)	1,000kgf / 2.0mm deflection	
	ASB-124	600 x 600 x 48(T)	1,000kgf / 2.0mm deflection	
HEAVY DUTY	AHB-639	600 x 600 x 39(T)	700kgf / 2.0mm deflection	
	AHB-648	600 x 600 x 48(T)	1,200kgf / 2.0mm deflection	
	AXB-124	600 x 600 x 48(T)	1,500kgf / 2.0mm deflection	
	AXB-653	600 x 600 x 48(T)	1,500kgf / 2.0mm deflection	
	ATB-124	600 x 600 x 48(T)	1,700kgf / 2.0mm deflection	
	AUB-124	600 x 600 x 48(T)	1,800kgf / 2.0mm deflection	
	Strong 7000B	600 x 600 x 48(T)	2,400kgf / 2.0mm deflection	
	AHB-242	24" x 24" x 1.89"(T)	2,000lbs / 2.0mm deflection	
	AHB-242	24" x 24" x 1.89"(T)	3,000lbs / 2.0mm deflection	

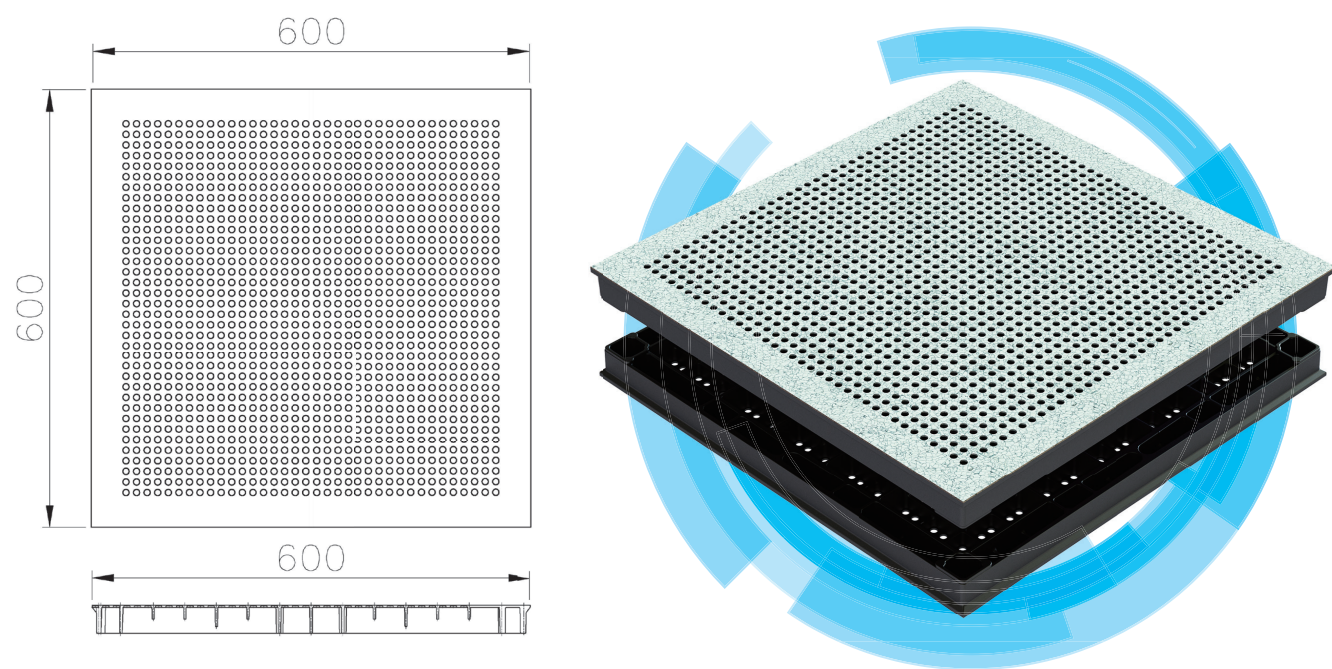
* Specification can be changed in accordance with quality improvement

Perforated Panel

Perforated panels are designed to provide a smooth air flow from the ceiling to the floor with 1,296 or 1,024 chamfered holes.

Features

- 18%~22% open ratio for a smooth air flow.
- All tile finished panels with chamfered holes for maximum air flow.
- Various options of finishing materials.
- Semi-permanent usage through recycling.
- Excellent process ability.



PERFORATED PANELS LOAD CHART

Type	Model	Dimension(mm)	Concentrated Load @ 1/2 Edge	Open Ratio	Finish Type
STANDARD	ALP-639	600 x 600 x 39(T)	450kgf / 2.0mm deflection	18%-22%(1,296)	1. PVC Tile - Conductive Tile - Static Dissipative Tile 2. E-coating - Black, Silver colours 3. Epoxy powder - Conductive powders (Gray, Black colours) - Non-conductive powders (Ivory, Sliver colours) 4. Ni-Cr Plating
	ASP-639	600 x 600 x 39(T)	550kgf / 2.0mm deflection	18%-22%(1,296)	
	ASP-644	600 x 600 x 44(T)	750kgf / 2.0mm deflection	18%- 22%(1,024)	
	ASP-648	600 x 600 x 48(T)	950kgf / 2.0mm deflection	18%-22%(1,296)	
	ASP-124	600 x 600 x 48(T)	950kgf / 2.0mm deflection	18%-22%(1,024)	
HEAVY DUTY	AHP-639	600 x 600 x 39(T)	650kgf / 2.0mm deflection	18%-22%(1,296)	
	AHP-648	600 x 600 x 48(T)	1,150kgf / 2.0mm deflection	18%-22%(1,296)	
	AXP-124	600 x 600 x 48(T)	1,400kgf / 2.0mm deflection	18%-22%(1,024)	
	AXP-653	600 x 600 x 48(T)	1,400kgf / 2.0mm deflection	18%-22%(1,024)	
	ATP-124	600 x 600 x 48(T)	1,600kgf / 2.0mm deflection	18%-22%(1,024)	
	AUP-124	600 x 600 x 48(T)	1,700kgf / 2.0mm deflection	18%-22%(1,024)	
	Strong 7000P	600 x 600 x 48(T)	2,300kgf / 2.0mm deflection	18%-22%(1,024)	
	AHP-242	24" x 24" x 1.89"(T)	2,000lbs / 2.0mm deflection	18%-22%(1,024)	
	AHP-242	24" x 24" x 1.89"(T)	3,000lbs / 2.0mm deflection	18%-22%(1,024)	

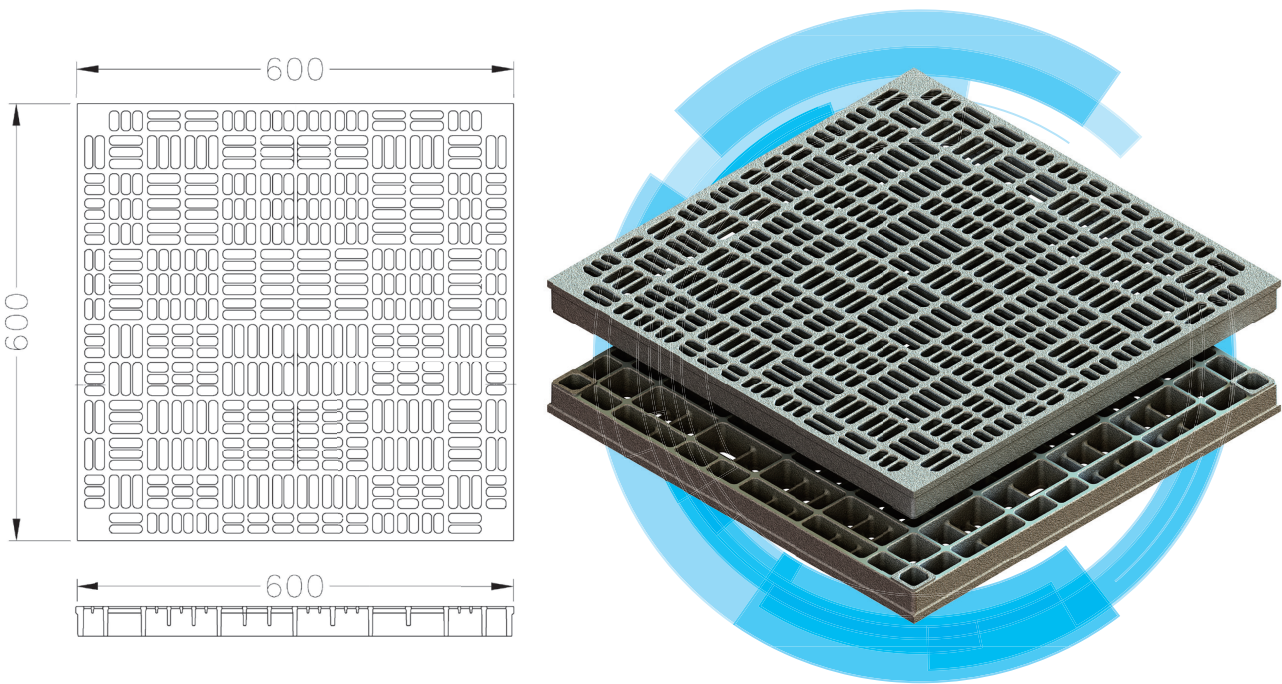
* Specification can be changed in accordance with quality improvement

Grating Panel

Grating panels are designed for the areas where maximum air flow is required and have grid patterns which generate minimum vibration from rolling loads and foot traffic.

Features

- Maximum air flow from 45% to 51%.
- Interchangeable with solid and grating panels.
- Available in conductive epoxy powder coating, Nickel Chrome plating and various options of other non-conductive colors.
- Semi-permanent usage through recycling.
- Excellent process ability.



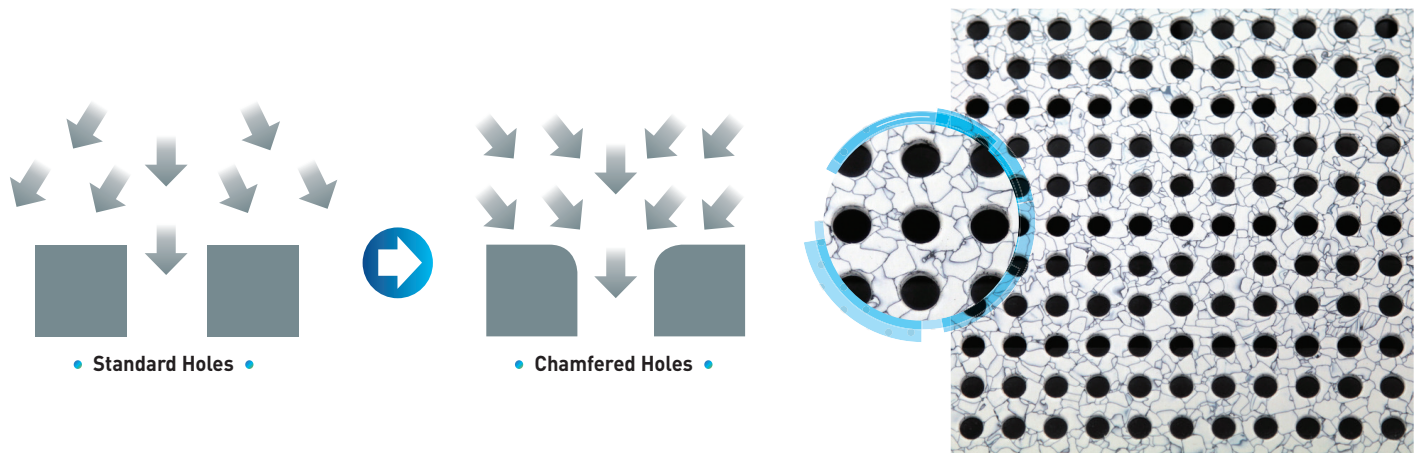
GRATING PANELS LOAD CHART

Type	Model	Dimension(mm)	Concentrated Load @ 1/2 Edge	Open Ratio	Finish Type
STANDARD	ASG-639	600 x 600 x 41(T)	600kgf / 2.0mm deflection	26%, 45%	1. E-coating - Black, Silver colours 2. Epoxy powder - Conductive powders (Gray, Black colours) (Ivory, Silver colours) 3. Ni-Cr Plating
	ASG-601	600 x 600 x 41(T)	600kgf/ 2.0mm deflection	51%	
HEAVY DUTY	AHG-651	600 x 600 x 50(T)	1,000kgf / 2.0mm deflection	51%	
	AHG-602	600 x 600 x 50(T)	1,000kgf / 2.0mm deflection	51%	
	AHG-604	600 x 600 x 50(T)	1,000kgf / 2.0mm deflection	51%	
	AHG-242	24" x 24" x 1.89"(T)	2,000lbs / 2.0mm deflection	54%	

** Specification can be changed in accordance with quality improvement*

Chamfered Holes

Perforated panels can effectively reduce air turbulence by chamfering the sharp and uneven drilled holes on the surface of panels.

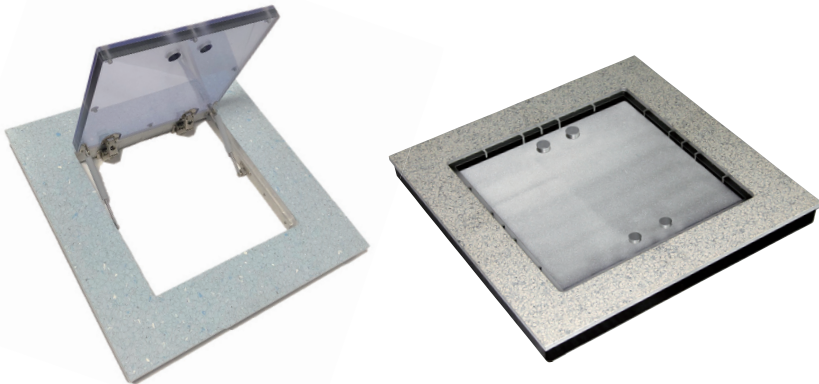


Special Purpose Panel

Perforated panels can effectively reduce air turbulence by chamfering the sharp and uneven drilled holes on the surface of panels.

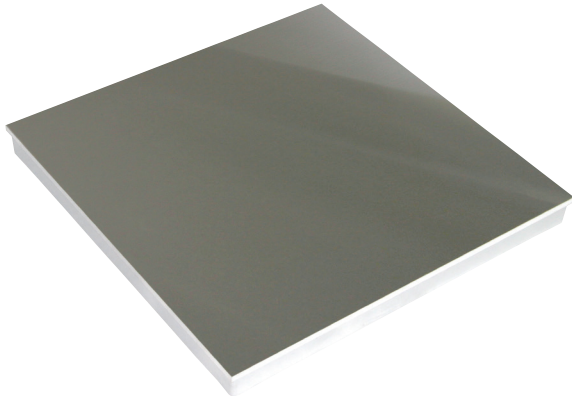
Acrylic Insert Panels (Vision / Access)

Vision or Access panels are available with acrylic inserts which are produced to the customer's specified size to allow you to see beneath the panel from above, or to allow easy access.



1.2mm(T) Stainless Steel(SUS) finished Panel for AGV Line

Stainless Steel(SUS) finished panel is effectively used for the path of movement of automated guided vehicle(AGV), is to prevent scratches on the surface of panel caused by regular movement of equipment.



Pedestals (Aluminum / Steel) & Post

SH's Pedestal bases are designed and made of either aluminum or steel as well as divided into three product groups of Standard Duty(SD), Heavy Duty(HD) and Ultra Duty(UD), X-Clamp version depending upon the loading requirements of the project.

Each comes complete with matching pedestal Heads and are available in both a mill-finished and E-coated finish.

The pedestal bases can be mechanically fastened to the subfloor or concrete foundation, or they can be fixed with an adhesive to secure them in place.

All the SD, HD and UD pedestals have undergone, and performed exceptionally well in, CISCA Axial Load and Overturning Moment Tests on pedestals with an FFH of between 150mm and 1,200mm.



Aluminum Pedestal & Post

Type	FFH(mm)	Dimension(mm)	Axial Load	Finish Type
STANDARD DUTY (SD)	250 - 500	113x6.0(Al. Base) + 32.8x3.0(Al. Pipe) + 1"(Al. Stud) + Al. Head	≥ 12, 017lbs	1. Shot blast 2. E-coating - Black, Silver colours 3. Epoxy powder - Conductive powders (Black colours)
HEAVY DUTY (HD)	500 - 1200	150x7.0(Al. Base) + 50.8x3.0(Al. Pipe) + 1-1/8"(Al. Stud) + Al. Head	≥ 14,350lbs	
POST	500-V.A.R	150x150x106(Base) + Lx5.5T(Pipe) + 100x100x100(Head)	≥ 10,000kgf	Inquiry Needed

Steel Pedestal

Type	FFH(mm)	Dimension(mm)	Axial Load	Finish Type
STANDARD DUTY (SD)	150 - 250	100x3.2(Steel Base) + M19(Steel Stud) + Al. Head	≥ 23,000lbs	1. Shot blast 2. E-coating - Black, Silver colours 3. Epoxy powder - Conductive powders (Black colour)
	150 - 500	150x4.5(Steel Base) + M24(Steel Stud) + Al. Head	≥ 24,000lbs	
HEAVY DUTY (HD)	500 - 800	150x4.5(Steel Base) + 42.7x2.3(Steel Pipe) + M24(Steel Stud) + Steel Head	≥ 25,000lbs	
	800 - 1200	170x6.0(Steel Base) + 48.6x2.3(Steel Pipe) + M24(Steel Stud) + Steel Head	≥ 26,000lbs	
ULTRA DUTY	1200 - 1500	200x9.0(Steel Base) + 60.5x3.2(Steel Pipe) + M25(Steel Stud) + Al.UV Head	≥ 28,000lbs	
X-CLAMP	250 - 1000	152x7.0(Steel Base) + 43x3.5(Steel Pipe) + M24(Steel Stud) + Steel Head	≥ 35,000lbs	

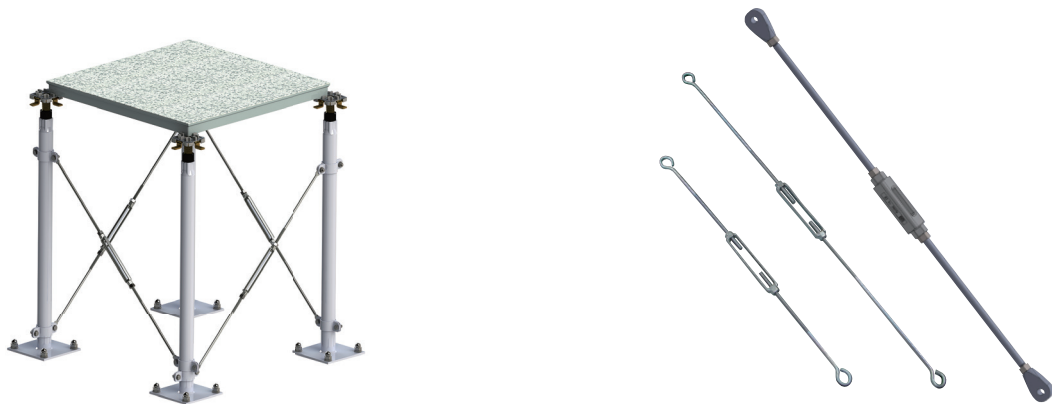
Stringers (Aluminum / Steel)

Stringers are extruded aluminum profiles designed to fit between and span the pedestal heads to provide lateral support to the system. The stringers DO NOT in any way determine the spacing requirements between the pedestals as the holes are elongated(Slotted) to allow them to conform to the size of the panels.



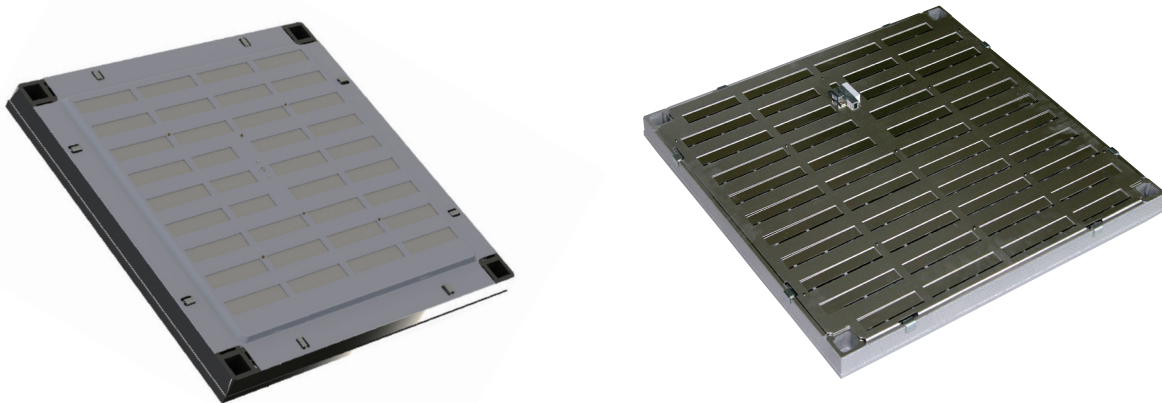
Bracing (Aluminum / Steel)

Bracing, which is made of either aluminum or steel materials, is clamped at pedestal to pedestal or pedestal to concrete foundation to prevent latera l movement and any potential dislocation of structure system caused by possible a little tiny bit of vibration at the upper/lower side of structure system.



Aluminum Damper

Damper's are available for perforated and grated panels to adjust the air-flow through the floor to balance a room around tools and work stations. They are adjustable from 0~100% open in incremental settings.



Post & Flat Pad Type

For maximum space under the structure

Installed with

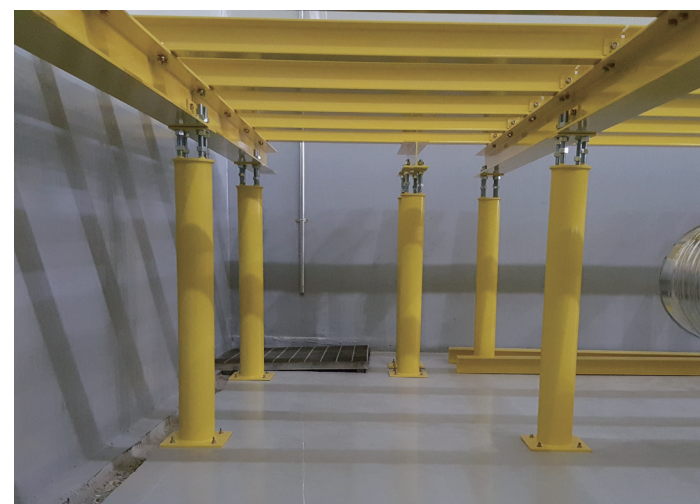
- Post + Main Beam + Sub Beam + Flat Pad

Height

- Height : 1,500-3,000mm
- ± 25 mm is adjustable by steel post

Features

- Sufficient space under the structure



H-Beam & Pedestal Type

Easy Installation on the top of the waffle beam type structure

Installed with

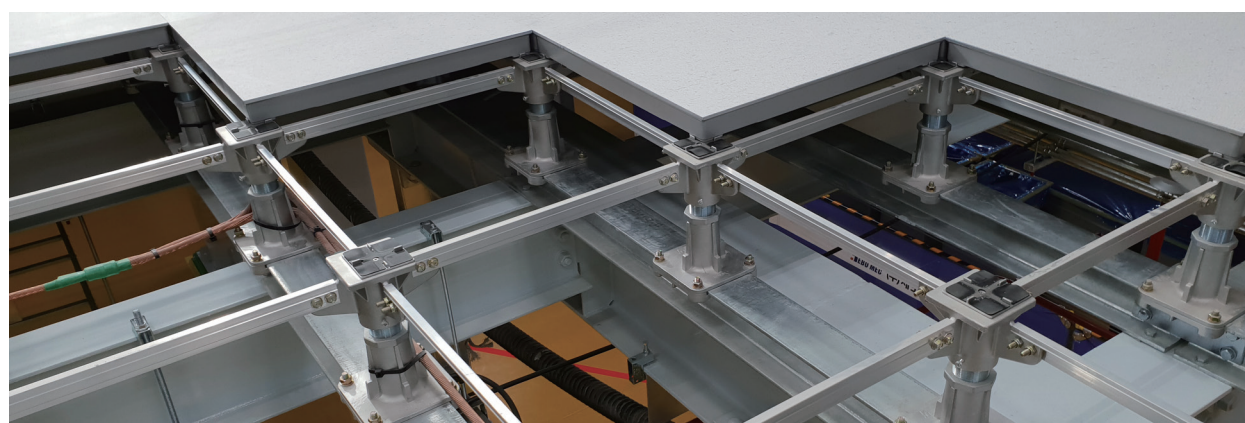
- 4 Stud Bolts + H-Beam + Flat Pad

Height

- Height : 300-450mm
- ± 25 mm is adjustable by 4 stud bolts

Features

- Cost cutting



Global Blueprint by SEOHO

Inspire the next environmental activities

Raised Access Floor System

Put our worldwide presence, proven performance, production capacity and commitment to quality to work for you! SH has the largest panel production capability in the industry. Current production capacity is 5,000 panels per day and we are working to double this in the future as the market requires.